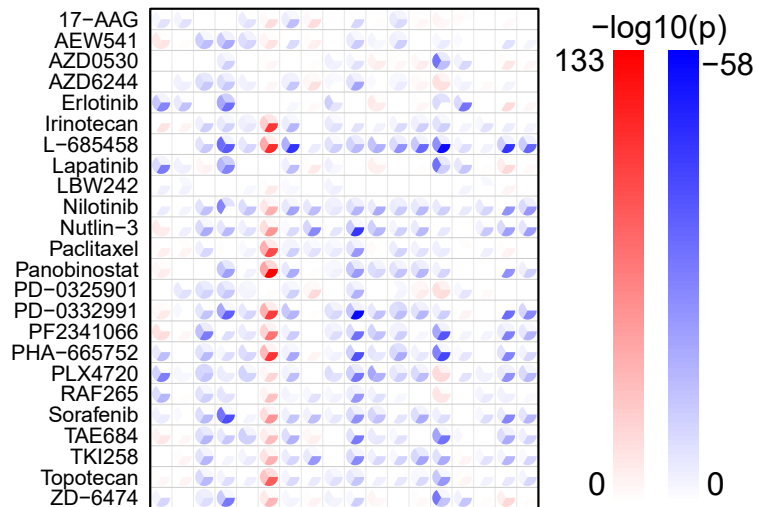
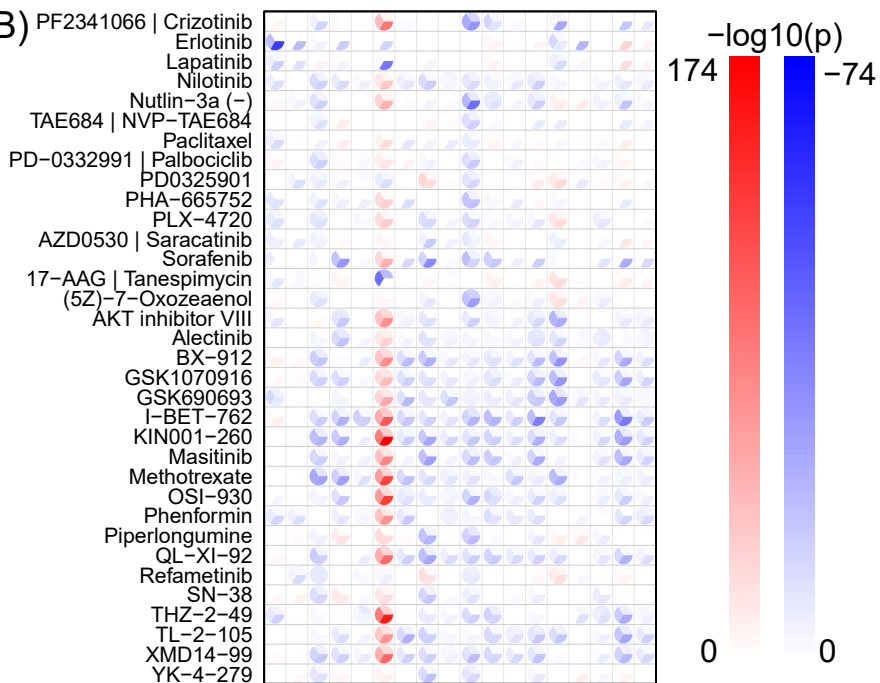


AUTONOMIC_GANGLIA
 BONE
 BREAST
 CENTRAL_NERVOUS_SYSTEM
 ENDOMETRIUM
 HEMATOPOIETIC_AND_LYMPHOID_TISSUE
 KIDNEY
 LADGE
 LIVER
 LUNG
 OESOPHAGUS
 OVARY
 PANCREAS
 SKIN
 SOFT_TISSUE
 STOMACH
 UPPER_AERODIGESTIVE_TRACT
 URINARY_TRACT

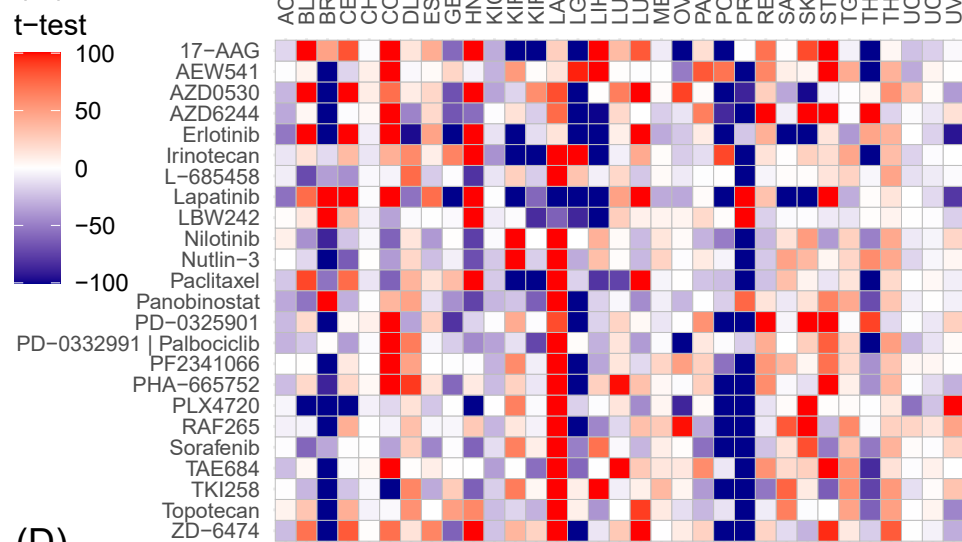
(A)



(B)



(C)



(D)

